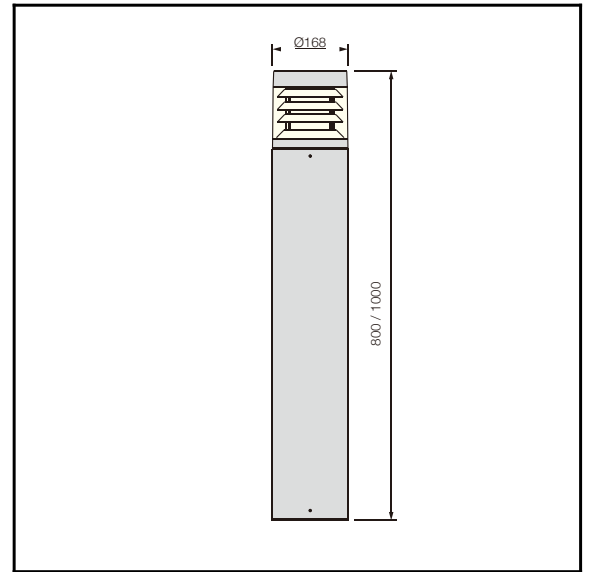


OUT 



The photograph may not match the reference exactly.
Please read the product description to identify the finish.



C-14FG

TECHNICAL CHARACTERISTICS



| | |
|--------------------------|--|
| Product Model: | C-14FGH100 |
| IP Protection degrees: | IP65 |
| IK Protection degrees: | IK08 |
| Light source: | 144 x SMD 2835 |
| Total power consumption: | 25W |
| Luminous Flux: | 750-875Lm |
| Luminous efficiency: | 30-35Lm/w |
| Color temperature: | 4000K as standard. Optinal 2700K,3000K & 5700K. Amber |
| Voltage/Frequency: | 100-240V/50-60Hz |
| Warranty(Years): | 3 |
| Units per box: | 1 |
| Net Weight(Kg) | 5.8 |

MATERIALS / FINISHES

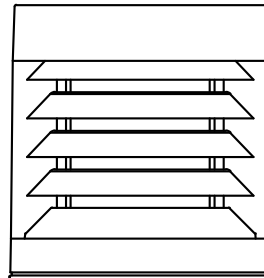
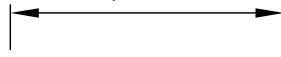
| | |
|--|-------------------------------------|
| Structure material: High purity aluminium | aiffuser material: PC |
| Structure finish: Black | Diffuser finish: Transparent |

GEAR

Multi-voltage electronic gear included (110-240 V / 50-60 Hz)

Lm^(N): Nominal flow of light in actual working conditions. Its actual flow will depend on the environmental conditions and the efficiency of the optics and/or diffuser.

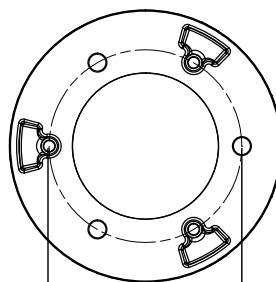
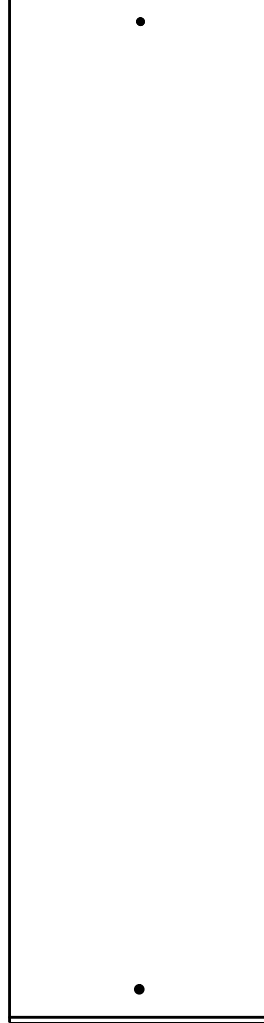
$\phi 168$



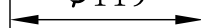
Transparent PC

High purity aluminum

800/1000



$\phi 119$



Installation template

C-14FG